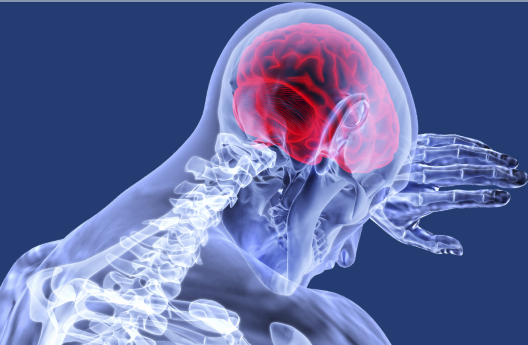


# Alberta Brain Injury Network

Canadian Mental Health  
Association



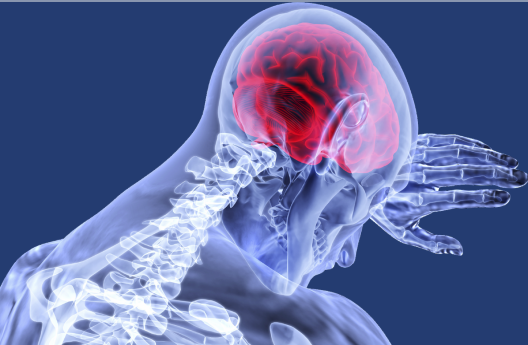
The Brain Injury Program at CMHA is part of a provincial brain injury network. Service Coordinators support adults and their families who are experiencing the effects of an acquired brain injury.

**5017 50th Ave**  
**Red Deer, AB T4N 4B2**  
**403.342.2266**  
**[www.cmhareddeer.ca](http://www.cmhareddeer.ca)**



# Alberta Brain Injury Network

Canadian Mental Health  
Association



The Brain Injury Program at CMHA is part of a provincial brain injury network. Service Coordinators support adults and their families who are experiencing the effects of an acquired brain injury.

**5017 50th Ave**  
**Red Deer, AB T4N 4B2**  
**403.342.2266**  
**[www.cmhareddeer.ca](http://www.cmhareddeer.ca)**



## Who is This Program For?

- People living with a permanent, diagnosed, acquired brain injury
- In need of short term supports
- Not currently receiving supports from Persons with Developmental Disabilities (PDD) or in a full time support facility
- Live in Central Alberta
- Able to live somewhat independently
- Are currently over the age of 18

## Scope of Support

- Finances
- Rehabilitation
- Basic Needs
- Legal Issues
- Employment
- Education
- Adjusting to Your Situation

## How Do I Access This Program?

Referrals may be made through a number of sources, including directly contacting our office at the number listed . Other agencies may make a referral on your behalf, The referral form is a single page, and is quick and easy to fill out.



**Canadian Mental  
Health Association**  
**Central Alberta**  
*Mental health for all*

## Who is This Program For?

- People living with a permanent, diagnosed, acquired brain injury
- In need of short term supports
- Not currently receiving supports from Persons with Developmental Disabilities (PDD) or in a full time support facility
- Live in Central Alberta
- Able to live somewhat independently
- Are currently over the age of 18

## Scope of Support

- Finances
- Rehabilitation
- Basic Needs
- Legal Issues
- Employment
- Education
- Adjusting to Your Situation

## How Do I Access This Program?

Referrals may be made through a number of sources, including directly contacting our office at the number listed . Other agencies may make a referral on your behalf, The referral form is a single page, and is quick and easy to fill out.



**Canadian Mental  
Health Association**  
**Central Alberta**  
*Mental health for all*

## Who is This Program For?

- People living with a permanent, diagnosed, acquired brain injury
- In need of short term supports
- Not currently receiving supports from Persons with Developmental Disabilities (PDD) or in a full time support facility
- Live in Central Alberta
- Able to live somewhat independently
- Are currently over the age of 18

## Scope of Support

- Finances
- Rehabilitation
- Basic Needs
- Legal Issues
- Employment
- Education
- Adjusting to Your Situation

## How Do I Access This Program?

Referrals may be made through a number of sources, including directly contacting our office at the number listed . Other agencies may make a referral on your behalf, The referral form is a single page, and is quick and easy to fill out.



**Canadian Mental  
Health Association**  
**Central Alberta**  
*Mental health for all*

## Who is This Program For?

- People living with a permanent, diagnosed, acquired brain injury
- In need of short term supports
- Not currently receiving supports from Persons with Developmental Disabilities (PDD) or in a full time support facility
- Live in Central Alberta
- Able to live somewhat independently
- Are currently over the age of 18

## Scope of Support

- Finances
- Rehabilitation
- Basic Needs
- Legal Issues
- Employment
- Education
- Adjusting to Your Situation

## How Do I Access This Program?

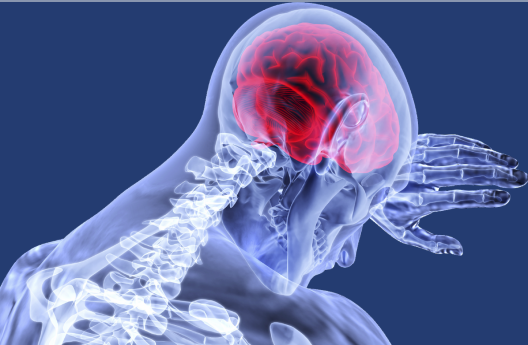
Referrals may be made through a number of sources, including directly contacting our office at the number listed . Other agencies may make a referral on your behalf, The referral form is a single page, and is quick and easy to fill out.



**Canadian Mental  
Health Association**  
**Central Alberta**  
*Mental health for all*

# Alberta Brain Injury Network

Canadian Mental Health  
Association



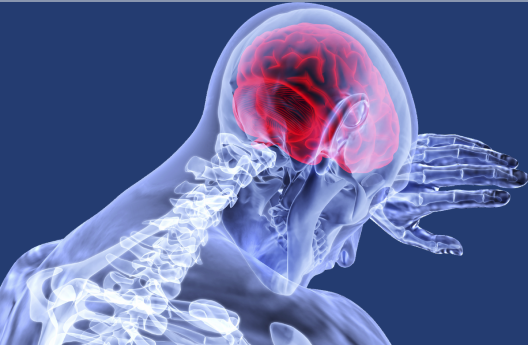
The Brain Injury Program at CMHA is part of a provincial brain injury network. Service Coordinators support adults and their families who are experiencing the effects of an acquired brain injury.

**5017 50th Ave**  
**Red Deer, AB T4N 4B2**  
**403.342.2266**  
**[www.cmhareddeer.ca](http://www.cmhareddeer.ca)**



# Alberta Brain Injury Network

Canadian Mental Health  
Association



The Brain Injury Program at CMHA is part of a provincial brain injury network. Service Coordinators support adults and their families who are experiencing the effects of an acquired brain injury.

**5017 50th Ave**  
**Red Deer, AB T4N 4B2**  
**403.342.2266**  
**[www.cmhareddeer.ca](http://www.cmhareddeer.ca)**

